

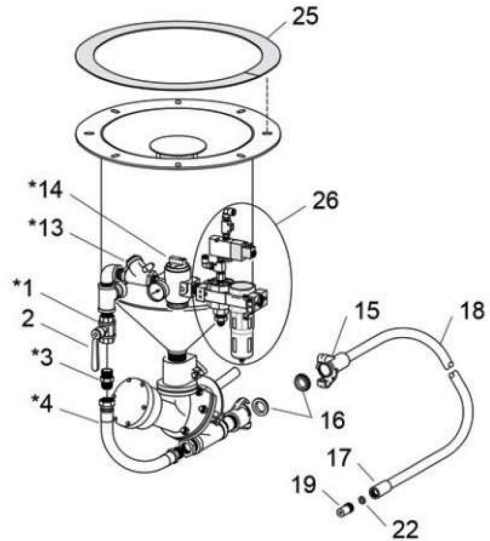
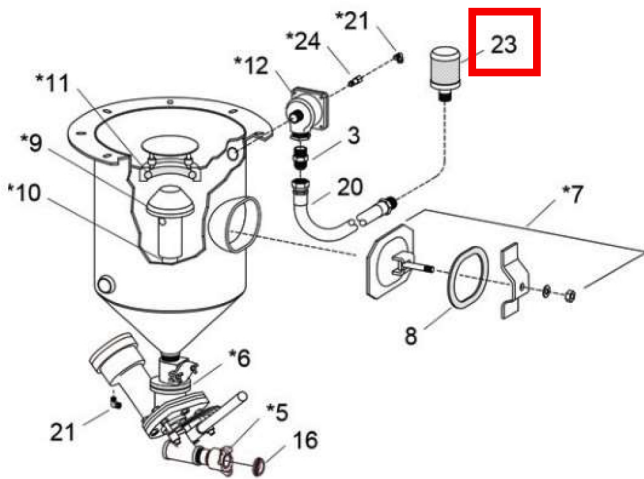
Description	Stock#	Wt.
-------------	--------	-----

Blast Machine

(-) Blast machine assembly, includes items with an asterisk (*).....	30285	
1. *Ball valve, 1" with handle (choke valve)	02396	
2. Handle, 1" ball valve.....	22531	
3. *Adaptor, 1" male NPT x 1" male flare.....	11720	
4. *Hose assembly, 1" x 21" pusher line	22508	
5. *CF coupling 1-1/4"	00551	
6. Metering valve, Sentinel		
• for 50-mesh and finer media, std.	21439	
• for 50-mesh and coarser media.....	20608	
7. *Inspection door assembly, 6" x 8".....	02377	
8. Gasket, 6" x 8" inspection door	02369	
9. *Pop-up valve, 4"	03699	
10. *Guide, pop-up, 1-1/4" x 4-1/2" toe nipple.....	21694	
11. *Seal, pop-up valve.....	02325	
12. *Outlet valve, 1" diaphragm.....	03371	
13. *Check valve, 1" swing	12187	

Description	Stock#	Wt.
-------------	--------	-----

14. *Regulator, 1" pilot operated with gauge.....	12052	
15. Coupling, 1/2" blast hose, CQA-1/2	00599	
16. Gasket, coupling, CQG, pkg. of 10	00850	
17. Nozzle holder, CHE-1/2	00577	
18. Blast hose, 1/2" x 16.5 ft. coupled with Items 15 and 17	01251	
19. Nozzle, tungsten carbide		
• CT-2, 1/8" orifice	01351	
• *CT-3, 3/16" orifice, standard	01352	
• CT-4, 1/4" orifice	01353	
20. Hose assembly, 1" x 42" exhaust.....	23916	
21. *Adaptor, el. 1/4" male NPT x 3/8" tube	11685	
22. Nozzle washer, NW-1, pkg. of 10	21580	
23. Muffler, 1" exhaust	05068	
24. Filter, 1/4" NPT male/remote inline.....	27618	
25. Gasket, adhesive-backed, 1/8" x 2," per foot		
6 feet required at this location.....	13089	
26. Inlet assembly, pneumatic pressure.....	30416	



Blast Machine Pulsar Plus III and VI