

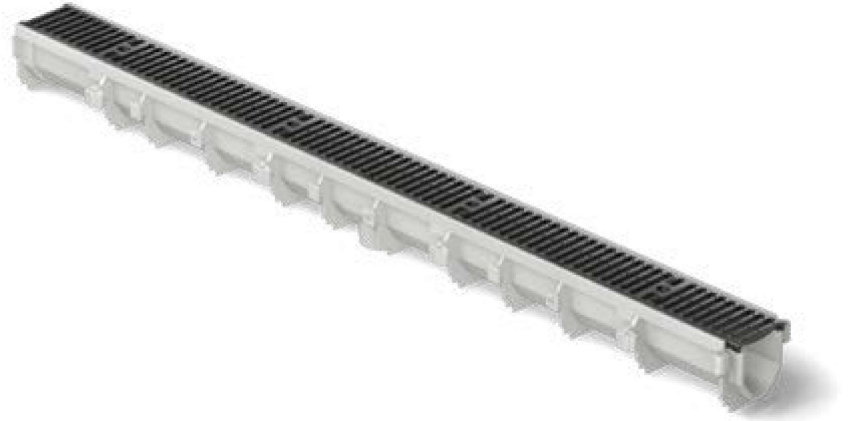
PERMA-TRENCH® HDPE TRENCH DRAINS

Z886 Perma-Trench®

HPDE 6" Drain System (4" Throat)

Z886 Applications

- Highways
- Industrial Parks
- Driveways
- Chemical Plants
- Kitchens
- Food Processing
- Pools
- Shopping Malls
- Parking Lots
- Industrial Plants
- Gas Stations
- Pharmaceuticals
- Airports
- Amusement Parks
- Airplane Hangars



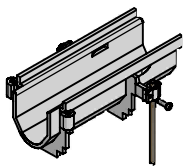
Features and Benefits

- 80" Pre-engineered Modular Channel Sections with 20" or 40" Grates
- Variety of Gratings – Multiple finishes and designs available
- .75% Built-In Slope – Handles greater flows, uniform slope
- Grate Options – From heel-proof to FAA rated; ADA compliant. See pages 36-37.
- Radiused Bottom – Better flow rate, less solids build-up
- Built-In Rebar Clips – Accommodates #3 or #4 rebar (supplied by others)
- Smooth High Density Polyethylene Structural Composite Interior – 0% water absorption
- Frame available in coated steel, stainless steel, or galvanized steel
- Durable and Lightweight – Strong corrosion-resistant material
- Extra Long Runs – Sidewall extensions allow pre-slope runs up to 300 feet

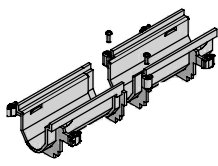
Engineering Specification

Channels shall be 80" long, 6-1/4" wide, and have a 4" wide throat. Modular channel sections shall be made of High Density Polyethylene (HDPE), have mechanical interlocking ends, and radiused bottom. Channel shall be provided either flat (neutral) or with a .75% built-in slope. Channels shall be available with inverts ranging from 3.5" to 12.50" (sidewall extensions optional; must be installed at factory). Channels shall have clips molded into the sides of the channel to accommodate vertical rebar for positioning and anchoring purposes. Choice of class A, B, C, D, E, and F grates shall be available with H-20 and/or FAA load ratings and/or ADA compliance with mechanical lockdown devices (refer to pages 24 and 25). End caps and catch basins shall be available to complement the channels and grates. End outlets, bottom outlets, and side outlets shall be available in 2", 3", 4", and 6" diameters. Trench drain shall be Flo-Thru model Z886. For downloadable CSI format specification, visit www.zurn.com.

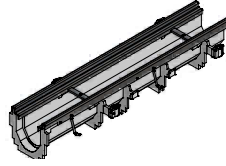
System Highlights



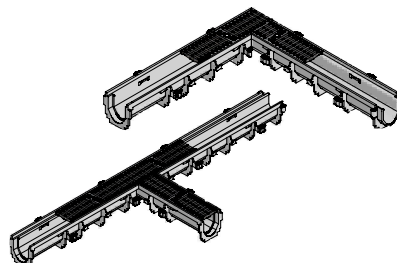
Integral Rebar Clips



Mechanical Interlocking Connection



Optional -HD Frame Assembly

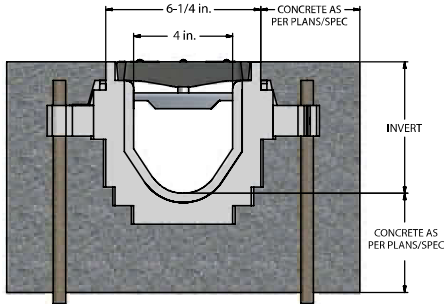


Tee and 90° Fabrication



Sidewall

Installation Specification



4" Throat / 6-1/4" Overall Width
Consult Plans and Specifications

TRENCH NUMBER	DIMENSIONS IN INCHES [MM]		MAX. FLOW RATE			APPROX. WEIGHT LESS GRATE (LB [KG])
	SHALLOW INVERT	DEEP INVERT	GPM	LPS	CFS	
8601	3.50 [89]	4.10 [104]	93	6	0.207	14 [6.2]
8602	4.10 [104]	4.70 [119]	122	8	0.272	15 [6.8]
8603	4.70 [119]	5.30 [135]	152	10	0.339	16 [7.4]
8603N	5.30 [135]	5.30 [135]	-	-	-	17 [7.7]
8604	5.30 [135]	5.90 [150]	183	12	0.408	18 [8.3]
8605	5.90 [150]	6.50 [165]	214	14	0.477	20 [8.9]
8606	6.50 [165]	7.10 [180]	245	16	0.546	21 [9.5]
8606N	7.10 [180]	7.10 [180]	-	-	-	22 [10]
8607	7.10 [180]	7.70 [196]	276	17	0.615	23 [10.6]
8608	7.70 [196]	8.30 [211]	308	19	0.686	25 [11.2]
8609	8.30 [211]	8.90 [226]	339	21	0.755	26 [11.8]
8610	8.90 [226]	9.50 [241]	371	23	0.827	27 [12.4]
8611	9.50 [241]	10.1 [257]	403	26	0.898	29 [13]
8612	10.10 [257]	10.7 [272]	435	28	0.969	30 [13.6]
8612N	10.70 [272]	10.7 [272]	-	-	-	30 [13.6]
8613	10.70 [272]	11.3 [287]	467	30	1.041	31 [14.2]
8614	11.30 [287]	11.9 [302]	498	32	1.11	33 [14.8]
8615	11.90 [302]	12.5 [318]	530	34	1.181	34 [15.4]

